

Pre application decision flow chart

Environmental Permitting Regulations (EPR) 2010

The importance of pre application discussions

Pre-application discussions can help the quality of your application and help reduce the risk and uncertainty that you may face when trying to get the permit/s you need for new developments. We strongly advise all applicants to have pre application discussions with us for bespoke permit applications so that we can:

- give you general advice on how to prepare their applications;
- advise you to focus on the key issues such as local factors that may affect the likelihood of getting a permit or that will affect the risk assessment or measures you need to put in place to meet environmental requirements, and;
- tell you what additional guidance is available.

Flow chart

This flow chart is designed to lead you through the main questions to ask before you contact us to discuss a possible application. It provides links to the right documents that will help with your decisions and the forms that you may need to fill in and send to us.

This flow chart is not designed to replace the advice and guidance we can provide if you wish to contact us direct. We always advise you to contact us with any site specific queries and encourage you to have pre application discussions with us either by phone or if appropriate at a face to face meeting, especially if your activity requires a bespoke permit.

Environmental permitting guidance

We recommend that you look through the guidance in the following order:

1) [‘How to comply’](#) contains guidance on complying with permit conditions and describes the basic standards and measures that **standard permit** holders will need to know. Applicants for **bespoke permits** will also find the basic information they require.

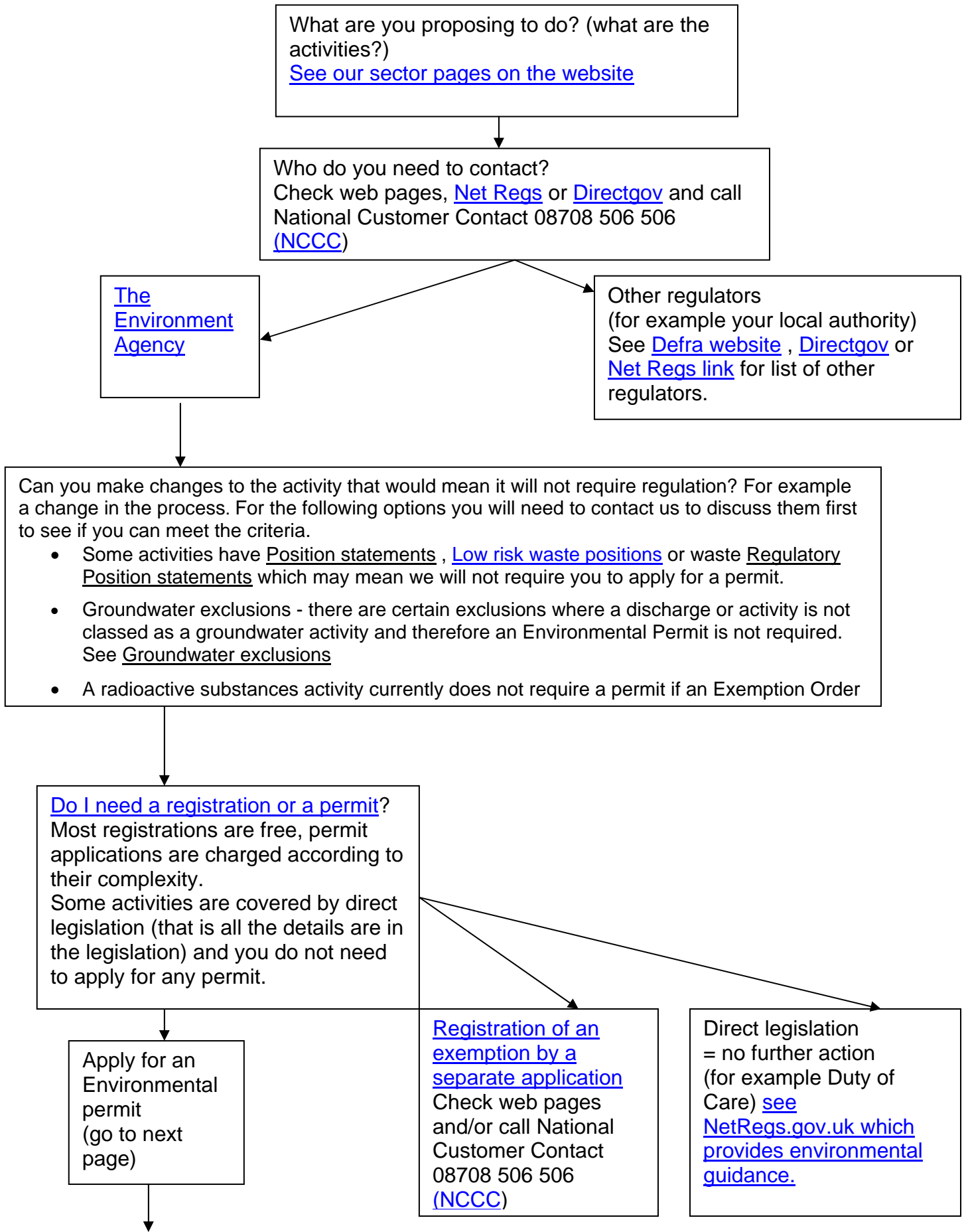
You will also need to use other technical guidance where appropriate. See relevant technical guidance notes, for example if you are applying for a water discharge also look at EPR 7.01 How to comply with your Environmental Permit for Water Discharge and Groundwater Activity Permits;

2) [Regulatory guidance notes](#) are high level guidance notes on our approach to implementing the Regulations. They sit below government guidance and generally you won't need to look through them unless you want an understanding of high level or detailed issues

3) Once you have an understanding of the general guidance you need to look at the [Horizontal guidance](#) which provides information about issues that are relevant to all activities regulated under EPR. For example, noise, odour, energy efficiency, or protection of land;

4) Sector [Technical guidance notes](#) are written for individual sectors for example small domestic and larger scale water company sewage treatment plants, intensive farming, chemicals, waste transfer and treatment, landfill and fish farms.

Pre application decision flow chart

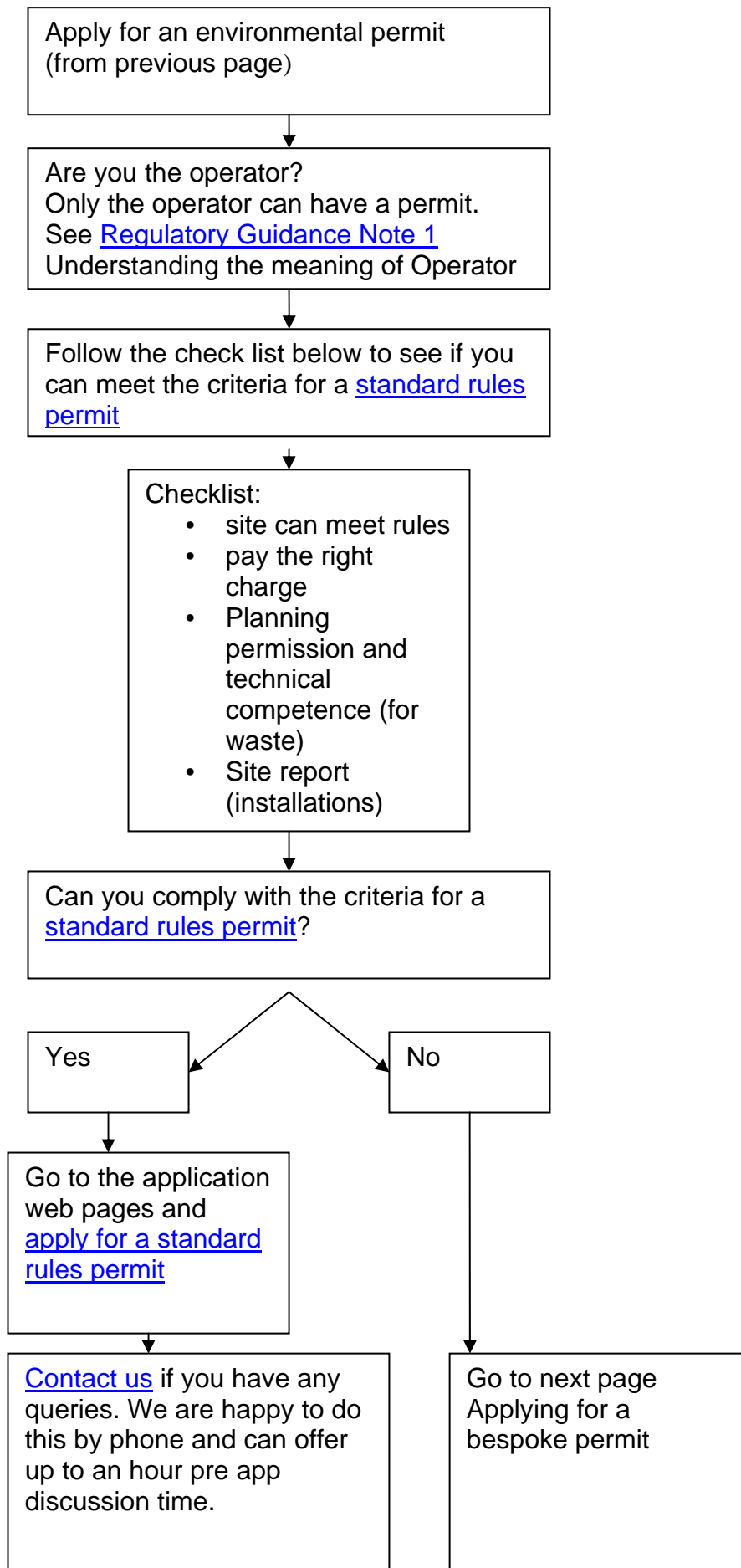


customer service line
08708 506 506

incident hotline
0800 80 70 60

floodline
08456 988 1188

www.environment-agency.gov.uk



Applying for a bespoke permit (from previous page)

First you need to set out the extent of your regulated facility. Regulated facility is a collective term used to describe all the different kinds of operations that require a permit under the Regulations. See [Regulatory Guidance Note 2](#) Understanding the meaning of regulated facility.

Bespoke permits checklist

Things you need to think about before any pre application discussions:

[Application forms](#)

[Charging](#)

[Opra](#)

[Technical Guidance](#)

[Operator ability](#)

[Major changes to existing operations](#)

[Consultation](#) (and see next box)

Is your application likely to be of interest to the public?

[See Regulatory Guidance Note 6](#)

[Determinations involving sites of high public interest](#)

Is there any information you will put in your application that you want to keep confidential for commercial or national security reasons? See

[Confidentiality/national security](#)

[Contact us](#) and arrange a pre application discussion.

We are happy to do this either by phone or arrange a meeting usually in one of our local offices to discuss your questions at more length.