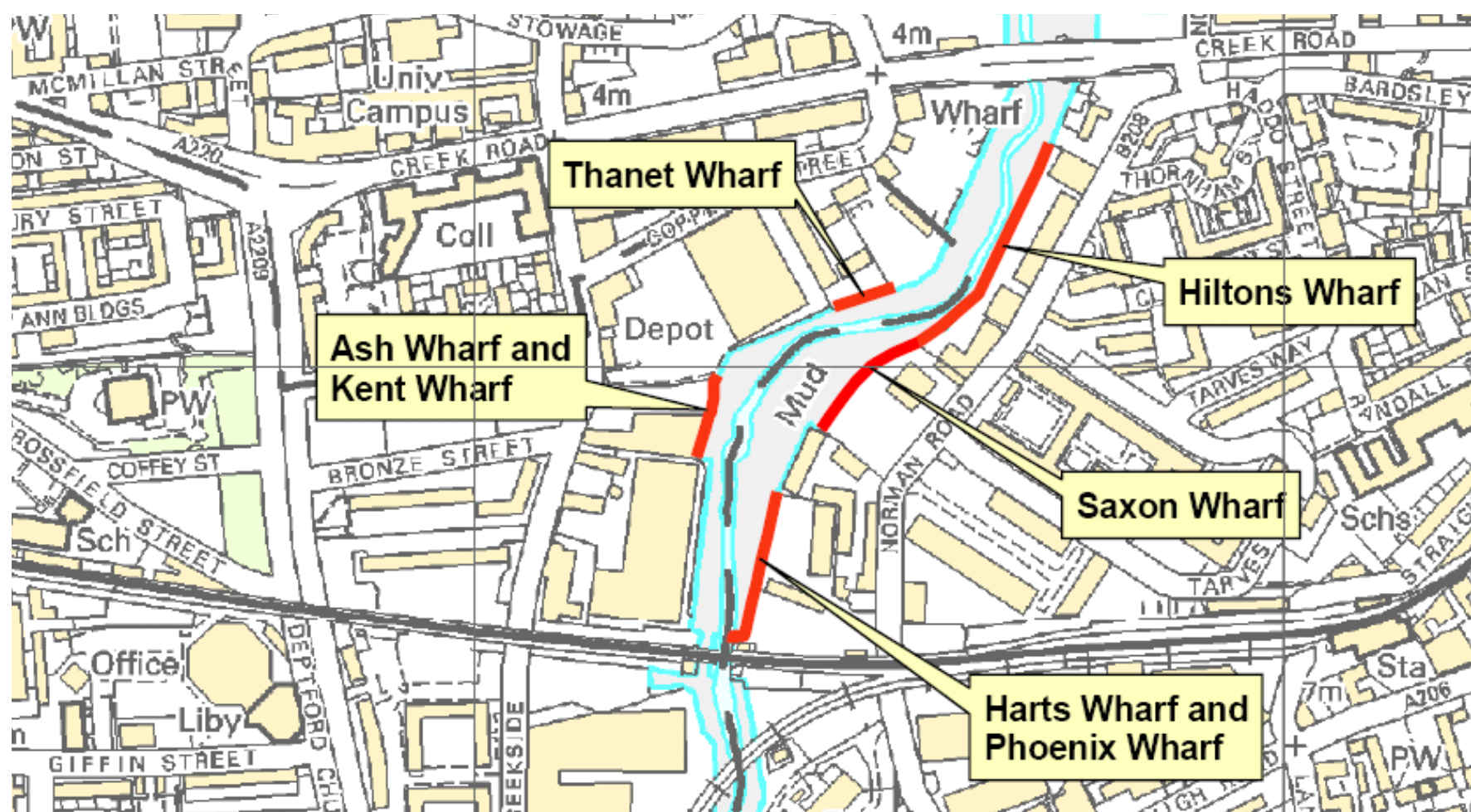


Flood risk management at Deptford Creek

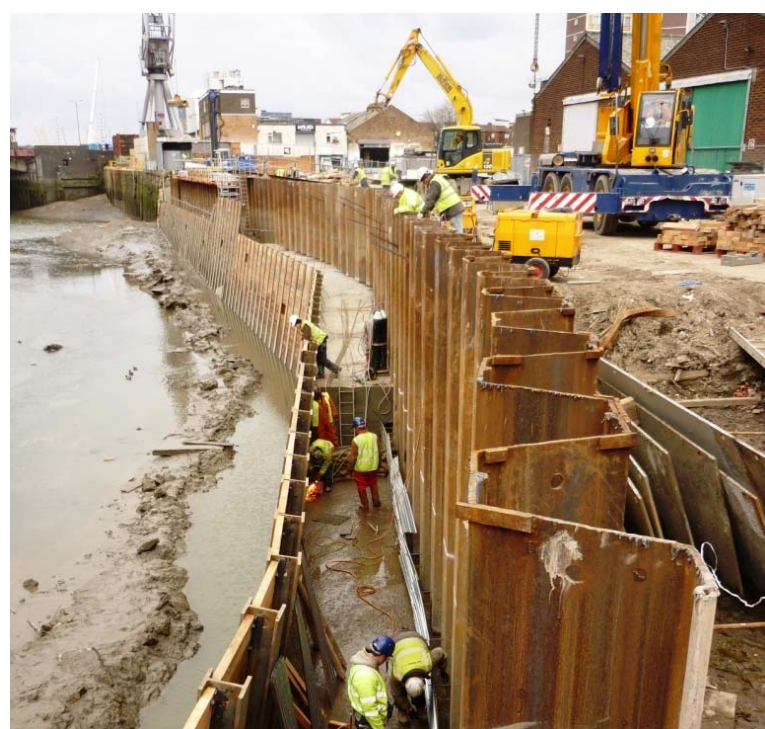
We have been carrying out construction work along the Deptford Creek since June 2009. We are improving the condition of the flood defences and increasing the level of protection they provide. Two frontages are being refurbished and five frontages are being replaced. You can see where these frontages are on the map below. We hope to complete these works by Summer 2010.



The Environment Agency's role in flood risk management

We are the leading public body for protecting and improving the environment in England and Wales. We play an important role in reducing the risk of flooding from rivers and the sea. We aim to reduce the risk to more people by improving the quality of existing structures and creating more where appropriate.

Hiltons Wharf



We have finished constructing the inter-tidal terraces and have begun constructing the concrete capping beams and flood walls.

Next period

We will continue constructing the concrete capping beams and flood walls until mid May. Then we will begin installing the finishes and carry out our reinstatement works. We hope to complete our works at Hiltons Wharf by mid June.

Impacts

The construction of the concrete capping beam may result in an increase in traffic due to the delivery of plant and materials. There may also be some noise and dust associated with our reinstatement works.

Thanet Wharf



Our works at Thanet Wharf are now complete.

Saxon Wharf



We have finished constructing the inter-tidal terraces and have begun constructing the concrete capping beams and flood walls.

Next period

We will continue constructing the concrete capping beams and flood walls until late May. Then we will begin installing the finishes and carry out our reinstatement works. We hope to complete our works at Hiltons Wharf by mid June.

Impacts

The construction of the concrete capping beam may result in an increase in traffic due to the delivery of plant and materials. There may also be some noise and dust associated with our reinstatement works.

Ash and Kent Wharves



We have finished installing the new H-piles and completed construction of the intertidal terraces.

Next period

We will begin constructing the concrete capping beam shortly and will continue until mid May. Then we will begin installing the finishes and carry out our reinstatement works. We hope to complete our works at Ash and Kent Wharves by early June.

Impacts

The construction of the concrete capping beam may result in an increase in traffic due to the delivery of plant and materials. There may also be some noise and dust associated with our reinstatement works.

Harts and Phoenix Wharves

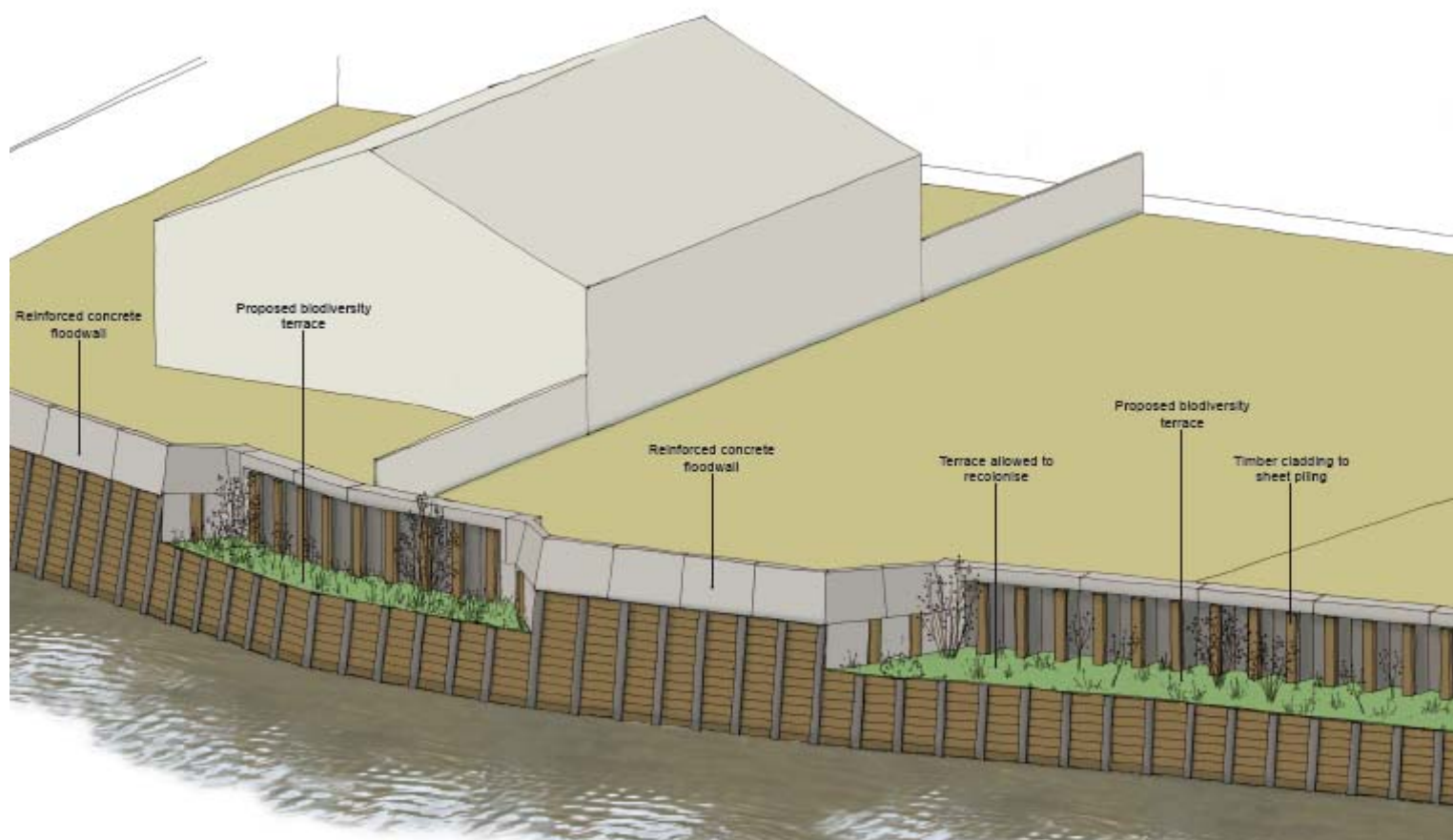


Our works at Harts and Phoenix Wharves are now complete.

Contact

If you have any questions about this work, please contact Blake Jones on 02086 920 720. You are also welcome to attend our site surgery hours on Monday afternoons between 14:00 and 16:00. Our site offices are located at 26 Creekside, Deptford, London, SE8 3DZ.

We will also be posting these monthly updates on our website at:
<http://www.environment-agency.gov.uk/homeandleisure/floods/108266.aspx>



An artist's impression of the new frontages.