

Environment Agency in  
partnership with



# Pagham to East Head

draft coastal defence strategy consultation – a summary of your responses

Public consultation on the draft Pagham to East Head coastal defence strategy closed on 29 August 2008. This newsletter summarises the draft strategy consultation and how your responses have shaped the final strategy. It explains what happens next including the approvals process and how we plan to implement the recommendations.

## Thanks to all who got involved

The project team would like to thank the community for getting involved and giving their views on this important document.

- More than 1,000 people attended workshops and exhibitions.
- Over 200 consultation responses were received.

We have been encouraged by the level of community interest. Our draft strategy recommendations were influenced by what people told us last year. The community recognised how we took their views into account and broadly supported most recommendations in the draft strategy.

The options we are recommending in this strategy are:

| Management option     | Description  |
|-----------------------|--|
| Hold the line sustain | Defences are raised and strengthened as sea levels rise, keeping the level of flood risk the same as it is now.                                |
| Managed realignment   | Improve coastal stability by moving coastal defences to a more sustainable location further inland, allowing controlled flooding to occur.     |
| Adaptive management   | Managing complex coastal areas by monitoring changes and acting on them in a planned but flexible way, increasing our understanding over time. |

## Consultation activities – who did we talk to?

This summer's consultation involved a wide range of activities to promote discussion of the draft strategy recommendations. There was a wide range of media coverage including local newspapers, radio and television broadcasts. We issued over 4,000 consultation summary documents to the public at exhibitions, local libraries, council offices and through local businesses. We also held workshops with community representatives, householders and landowners. Our four public exhibitions were attended by over 1,000 people where we were asked questions and the community were able to comment on the draft strategy.

The Manhood Peninsula Partnership arranged for a group of Dutch and

British experts from engineering and environmental backgrounds to work with community representatives to analyse the recommendations made in the strategy. They also considered whether there could be feasible alternatives to our preferred options. A Going Dutch II report was produced. Detailed comments were also received from community groups such as Save Our Selsey and the Manhood Peninsula Steering Group. We have considered all comments from community groups, the public and Going Dutch II and published them in a consultation report which is now available on the Environment Agency website.

The map below shows where people came from around the peninsula to visit the exhibitions.



2 Pagham to East Head summary of responses



Photo on front cover and above courtesy of West Sussex County Council

### **Recommended option – adaptive management**

Concerns were raised over short term issues affecting the area. People were anxious that action should be taken to address the erosion problem at Pagham Beach and the movement of shingle around the harbour mouth.

The adaptive management approach seeks to address these short term issues as well as implement a long term approach for managing flood and erosion risks over the next 100 years. Arun District Council has established the Pagham Harbour Coastal Issues Advisory Group to develop and recommend adaptive management solutions. The group consists of representatives from Arun and Chichester District Councils, key landowners, the Environment Agency, Natural England and Town and Parish Councils. They will consider the best way to address flood and erosion risk issues and nature conservation within the harbour. They will focus first on taking forward the recommendations of the Pagham Beach study commissioned by Arun District Council due to report by the end of this year.

### **Proposed management activity**

The final strategy calls for development of an Adaptive Management Plan that will incorporate the measures needed at Pagham Beach. It will include monitoring and further analysis so the management group can develop a better understanding about the coastal processes, and plan for improvement work when and if it is required in the future.

### **Next steps**

Arun District Council will work together with community representatives to make sure people in the area are made aware of the results of the recent study and planned actions.



### **Recommended option – hold the line sustain**

The public were happy to hear that Selsey was now being considered as one unit and that the preferred option had been changed to hold the line sustain. Concern remained over the availability of funding to build new defences, although people were happy that government funding had been found for the sea defence repair at Selsey West Beach.

### **Proposed management activity**

The final strategy option for the Selsey frontage is to hold the line sustain. This means defences will be raised and strengthened as sea levels rise, keeping the level of flood and erosion risk the same as it is now. The draft strategy recognised that defence works that are needed at Selsey will currently only attract a low priority for government funding.

### **Next steps**

Repairs to the existing defences at West Beach are due to start in November 2008 to replace the section of wall where it failed. Once the strategy is approved Chichester District Council will seek to promote the other works needed. If government funding is not available, we will investigate with the local community alternative sources of funding.

# Medmerry

## **Recommended option – managed realignment**

During the draft strategy consultation, concerns were raised over the current low protection provided by the shingle beach. There was a mixed reaction to managed realignment, with some support but also with remaining concerns. Issues were raised about how this could potentially impact negatively on local holiday parks, private residences and landowners. People generally accepted that the existing shingle bank only provides a low standard of protection and an alternative is needed. Many could see the advantages of the new inland banks but questioned how the option would work in the long term. Most people felt that for this scheme to be acceptable, the local community should be closely involved in shaping the details.

## **Proposed management activity**

This will involve building new inland engineered flood banks that will be maintained to uphold the protection to Selsey and surrounding communities.

The new flood banks will provide a greater than 1 in 100 year standard of protection to properties in western Selsey and secure the B2145 road and sewage treatment works.

## **Next steps**

As we seek approval for the final strategy, we will continue to involve land owners, householders and businesses who would be affected by a managed realignment scheme, together with local community groups and representatives. Given the vulnerability of this area, we plan to start the development of a scheme in 2009.



# East Wittering and Bracklesham

## Recommended option – hold the line sustain

Consultation responses were mainly supportive of the draft strategy's recommended option. Concerns were raised over the likelihood of funding for this option and how a managed realignment scheme at Medmerry could affect shingle movement in the future.



## Proposed management activity

The final strategy option for the East Wittering and Bracklesham frontages is to hold the line sustain. This means defences will be raised and strengthened as sea levels rise, keeping the level of flood and erosion risk the same as it is now. The draft strategy recognised that defence works that will be needed here currently only attract a low priority for government funding.

## Next steps

Following approval of the strategy, Chichester District Council will seek to promote the engineering works needed for defences here, which require replacing. If government funding is not available, we will investigate with the local community alternative sources of funding.

# Cakeham

## Recommended option – hold the line sustain

The draft strategy recommendation was supported during consultation.

## Proposed management activity

The beach frontage here is currently in reasonable condition and we do not expect any major works to be required for the next 20 years other than regular maintenance. In the medium to long term (20–100 years) defences will require improvement to sustain the standard of protection either on the existing line or with a minor realignment.

## Next steps

We will continue to maintain and to monitor beach levels.

# West Wittering including East Head

## Recommended option – adaptive management

In January 2007 the East Head Working Group was created to work with the community and local businesses to address the many objections received to our initial proposals.

The group was formed to discuss the complex management issues on the coast at East Head and West Wittering. The group included

Cakeham Manor Estate Ltd, Chichester District Council, Chichester Harbour Conservancy, the Environment Agency, the National Trust, Natural England, West Wittering Estate plc, and West Wittering Parish Council.

The group agreed that the complex processes affecting East Head will need a flexible management approach. Adaptive management will enable us to learn from monitoring changes and to act where necessary. The approach will aim to preserve the environmental, amenity and social value of East Head including the effects on the wider harbour.

West Wittering village will require new defences to manage the risks of flooding as sea levels rise. Defences will be needed in the future for properties to the north of the village at Ellanore Lane.

## Proposed management activity

The working group has now become the East Head Coastal Issues Advisory Group which will focus on taking forward adaptive management at East Head. The group is chaired by Chichester District Council as the operating authority for the frontage. The group will develop and implement the adaptive management plan for East Head considering appropriate actions and the triggers that will prompt them. Details of a planned scheme to prevent the sea breaking through at the Hinge were included in the draft strategy.

## Next steps

The East Head Coastal Issues Advisory Group will seek to carry out the planned work and gain private funding, which is likely to be needed. The Environment Agency will take forward plans to provide inland defences to protect West Wittering, which is likely to gain government funding.

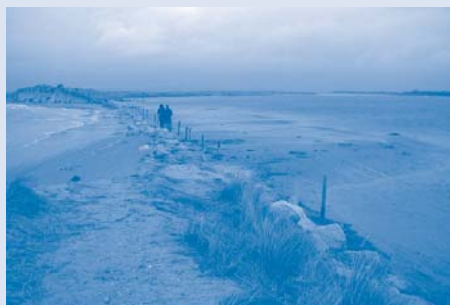




Photo courtesy of Havant Borough Council

## What will happen next

The strategy is being finalised for review by Arun and Chichester District Councils. Environment Agency and government approvals will be sought following endorsement by the Councils. We hope to complete this in 2009.

We will continue to work with key landowners and community representatives during this approval period.

Please visit our website for strategy updates  
[www.environment-agency.gov.uk](http://www.environment-agency.gov.uk)

Published by:

Environment Agency in partnership with Chichester and Arun District Councils  
Guildbourne House  
Chatsworth Road, Worthing  
West Sussex BN11 1LD  
Email: [enquiries@environment-agency.gov.uk](mailto:enquiries@environment-agency.gov.uk)  
[www.environment-agency.gov.uk](http://www.environment-agency.gov.uk)

© Environment Agency

GEHO 0908 BORL-E-P